



Artificial Intelligence (AI) Auditing your AI / Auditing with AI

Introduction, Ethics, & Pragmatic Guidance for Internal Audit



Table of Contents for Introduction to Artificial Intelligence



Table of Contents

01 Introduction to Artificial Intelligence

02 Types of AI

03 AI Trends & Statistics

04 Real World AI Use

05 AI & Internal Audit

06 AI Risks

07 Auditing AI

08 AI Auditing

The AI Hype



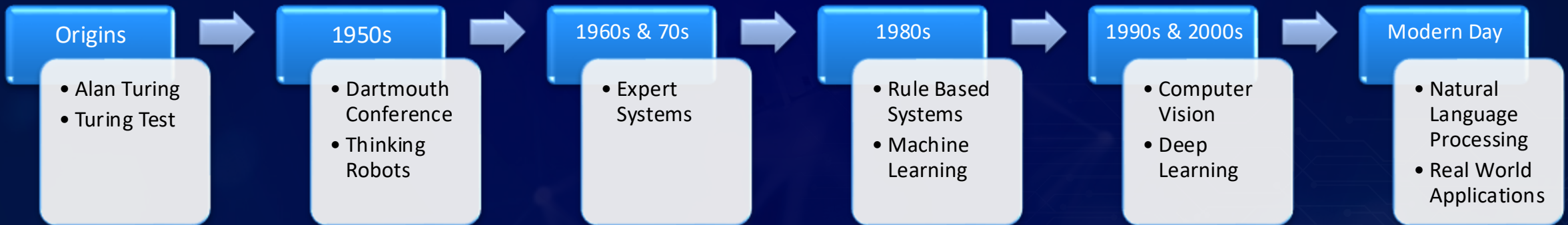
What is Artificial Intelligence

Artificial Intelligence

“
The ability of a digital computer or computer-controlled robot to perform tasks commonly associated with intelligent beings. The term is frequently applied to the project of developing systems endowed with the intellectual processes characteristic of humans, such as the ability to reason, discover meaning, generalize, or learn from past experience.
”

- Encyclopedia Britannica

<https://www.britannica.com/technology/artificial-intelligence>



History of Artificial Intelligence



Dartmouth College, New Hampshire, invented the phrase "Artificial Intelligence" in 1956

AI gained traction in the 1980s due to technological advancements that the Japanese made in this sphere

In 1997, IBM's Deep Blue, an AI system, created history when it defeated Gary Kasparov, the World Chess Champion at the time

Types of AI Models



Supervised Learning

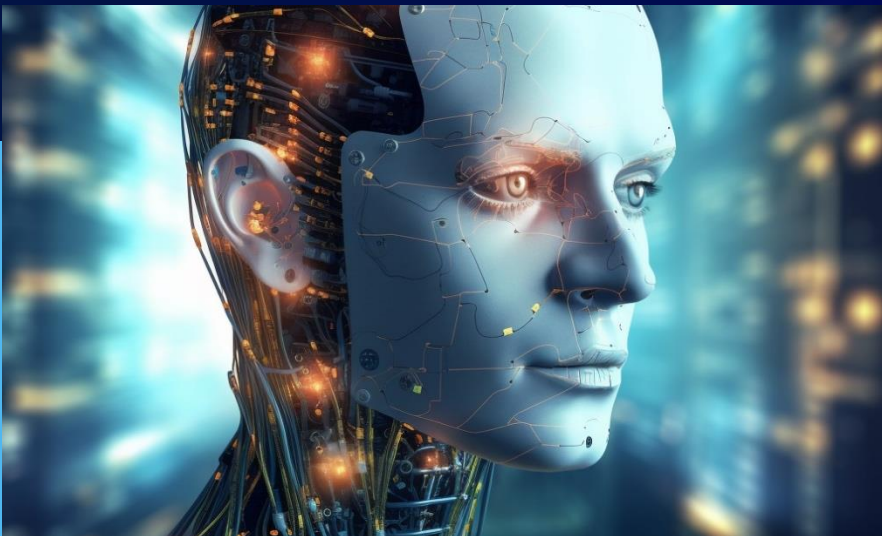
This type of AI model uses labeled data to make predictions, such as classifying an image as a cat or a dog.

Unsupervised Learning

This type of AI model uses unlabeled data to discover patterns and relationships in the data.

Reinforcement

This approach refines AI models using rewards and punishments to teach the AI how to complete a task.



Types of Artificial Intelligence

Based on Capabilities



AI Types



Artificial Narrow Intelligence ANI



Artificial General Intelligence AGI



Artificial Super Intelligence ASI

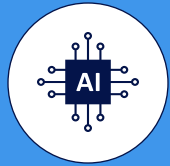
Capabilities

- Delivers Highly Focused Set of Tasks
- Examples:
 - Spam Filtering
 - Smart Phone Assistants
 - Terminator (T-101)

- Delivers General Tasks & Adaptable Capabilities
- Examples:
 - Androids / Robots
 - R2-D2
 - Terminator (T-1000)

- Exceeds Human Cognition in Broad Categories
- Examples:
 - The Matrix
 - Commander Data
 - Terminator (T-5000)

Types of Artificial Intelligence (AI) Software Comparative Analysis



AI Software



Platform



Type



Speech
Recognition
& Generation



Meeting
Transcription
& Summary



Code
Generation &
Debugging



Image
Recognition
& Generation



Business
Outcomes &
Predictions



Digital
Assistants &
Integrations



Price
(Per Month)

CoPilot
(Microsoft)

- o Desktop
- o Mobile
- o Web

Ecosystem

✓ / ✗

✓ / ✓

✓ / ✓

✓ / ✓

✓ / ✗

✓ / ✓

\$20 - \$30
Free Version Available

Gemini
(Google)

- o Mobile
- o Web

Ecosystem

✓ / ✓

✓ / ✓

✓ / ✓

✓ / ✓

✓ / ✗

✓ / ✓

\$20 - \$45
Free Version Available

ChatGPT
(OpenAI)

- o Mobile
- o Web

Platform

✓ / ✗

✗ / ✓

✓ / ✓

✓ / ✗

✗ / ✗

✓ / ✗

\$20
Free Version Available

Meta AI
(Facebook)

- o Mobile
- o Web

Point
/ Platform

✓ / ✗

✗ / ✓

✓ / ✓

✓ / ✓

✓ / ✗

✓ / ✗

Free

Einstein
(SalesForce)

- o Mobile
- o Web

Point
Solution

✓ / ✗

✗ / ✓

✗ / ✗

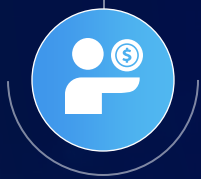
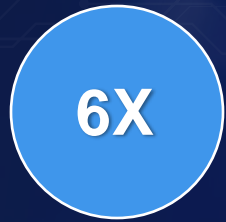
✓ / ✗

✓ / ✓

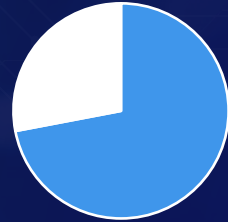
✓ / ✓

Varies

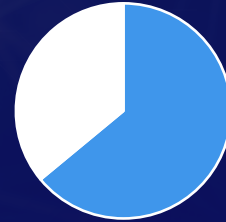
Latest Trends of Artificial Intelligence (AI) in Business



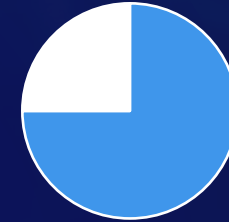
- **600%** increased investment in AI from \$214 Billion in 2024 to \$1.3 Trillion in 2030



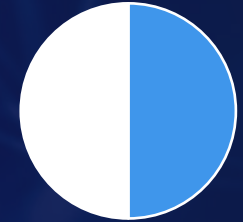
- **72%** of enterprises have implemented AI, up from less than 1/3 in 2023.



- **64%** of businesses expect AI to increase productivity

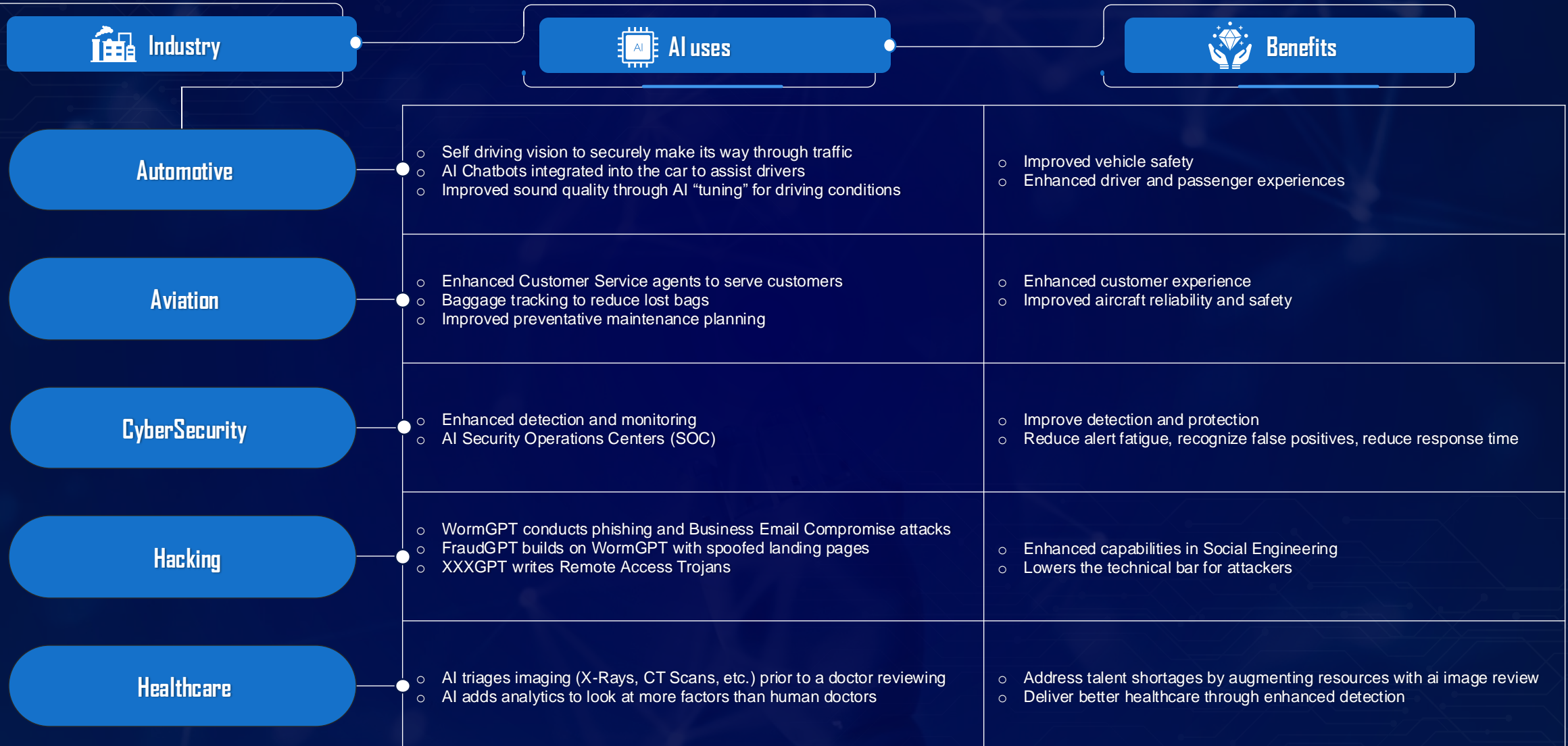


- **75%** of consumers are concerned that AI will provide misinformation

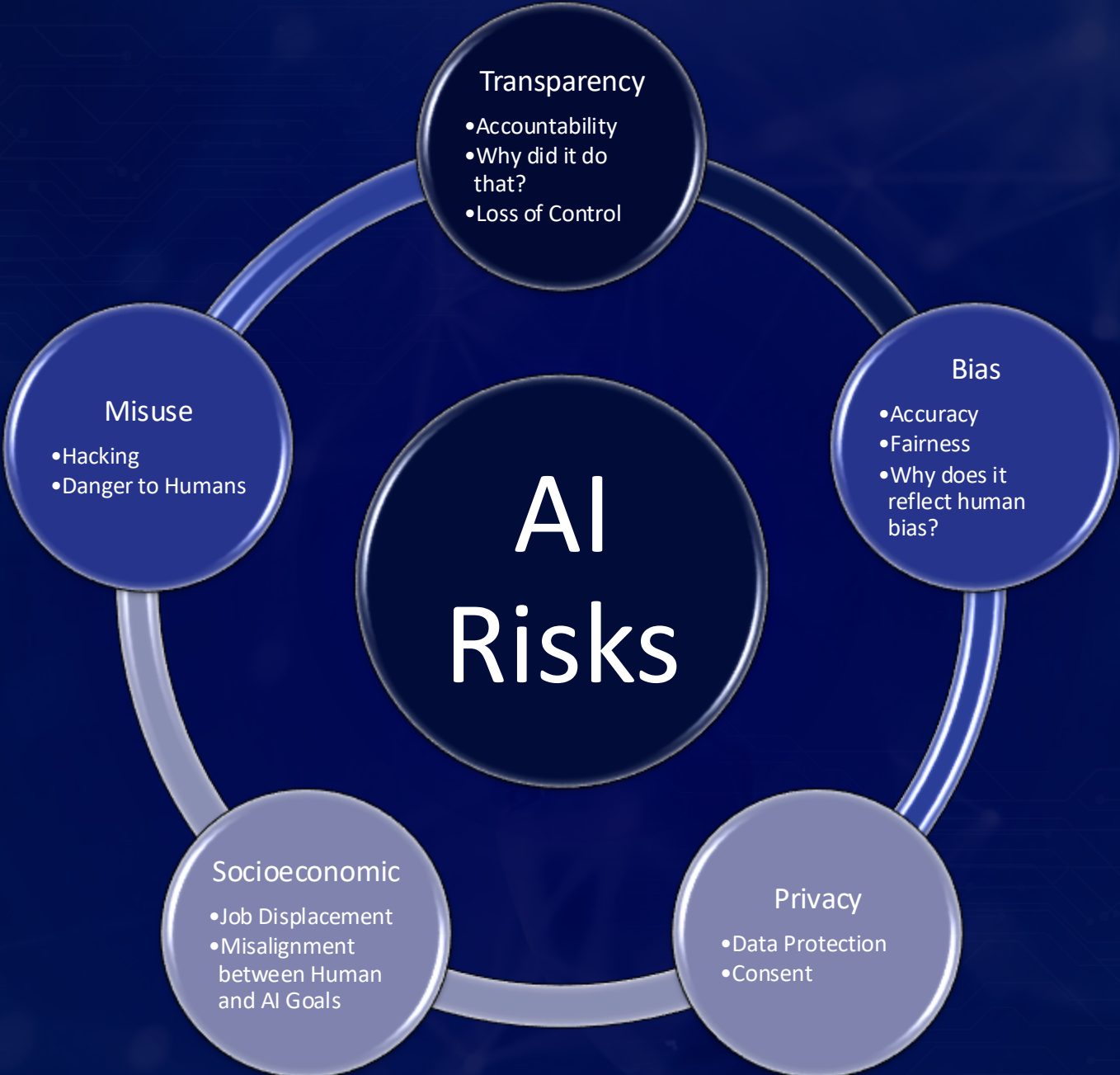


- **50%** of US Mobile Users use Voice-to-Text daily

Artificial intelligence applications uses in various sectors and their benefits



Risks of AI



Risks of AI



Risks of AI



Risks of AI

TECHSPOT

TRENDING FEATURES REVIEWS THE BEST DOWNLOADS PRODUCT FINDER FORUMS JOBS

Gemini ▾

AI TECH CULTURE MILITARY NUCLEAR

The Pentagon wants AI to enhance the capabilities of US nuclear weapons systems

Do these people never watch movies?

By [Rob Thubron](#) November 5, 2024 at 5:16 AM | [15 comments](#)



A large, glowing orange and yellow mushroom cloud nuclear explosion is centered in the article content area. The cloud has a thick, billowing stem rising from a dark horizon line, topped with a large, rounded, and textured cap. The background is dark, making the bright fire and smoke of the explosion stand out prominently.

AI & Internal Audit



AI & Internal Audit

Implementing AI and data analytics can significantly boost the efficiency and precision of technology-driven IA teams. Here are five ways they can leverage these technologies:

1. Audit planning is improved with automated risk evaluations.
2. Risk assessment is advanced by providing deeper insights.
3. Continuous auditing benefits from AI through early issue identification.
4. AI enhances fraud detection by analyzing extensive financial data.
5. Routine IA tasks are automated to increase efficiency using AI.



Auditing AI



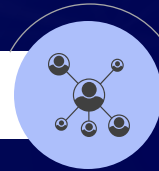
IG.01



Is there a policy governing AI?

- When was it last reviewed?
- When was it last approved?
- When was it last communicated?
- How was it communicated?
- Where is it published?
- Does it address all planned use cases?
- How is unapproved AI handled?

IG.02



Where is AI Used?

- Where is it inventoried?
- How is it inventoried (manually, etc.)?
- How is it updated?
- How often is it updated?
- When is it reviewed?
- What restrictions on the use of AI are in place?

IG.03



How is AI Approved & Onboarded?

- Where are requests for approval made?
- How are requests tracked?
- Who can approve a request?
- What criteria is used to approve a request?
- Where are approvals stored?
- How is the AI onboarded?

IG.04



What data is exposed to AI?

- What data, and classifications, can AI access?
- What data, if any, can AI access but should not disclose?
- Have data flow diagrams been created?
- How is new access to (sensitive) access reviewed and granted to AI?

Auditing AI

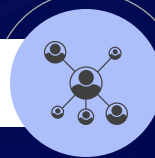
How is access to AI Controlled?

- Who has authority to grant access?
- What is the process to grant access?
- How is access reviewed and removed?
- How is unauthorized access blocked?



PD.01

PD.02



How is data controlled?

- How is AI access to data controlled?
- How is AI output of data controlled?

How is AI Access Monitored?

- How is approved usage identified?
- How is unapproved usage identified?
- What is done when unapproved usage is identified?



PD.03

PD.04



How is data controlled?

- How is AI access to data monitored?
- How is AI output of data monitored?

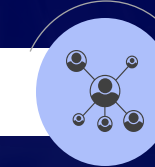
How is AI accuracy Monitored?

- What is the process to monitor AI accuracy?
- Are there scenarios which require additional accuracy checks?



PD.05

PD.06



How is AI monitored for offensive content?

How is AI Access Monitored?

- How is approved usage identified?
- How is unapproved usage identified?
- What is done when unapproved usage is identified?



PD.03

Thank You!



Address

707 Whitlock Ave SW Ste F1
Marietta, Georgia 30064



Contact Number

+1 (404) 281-8005



Email Address

jsorenson@rauschadvisory.com

